

---

## JSPCAT 1113302 Seal Kit 2" X 4" Hydraulic Seal Kit



Seal Kit equivalent to CATERPILLAR® Part Number 1113302

New OEM Aftermarket Seal Kit (Not branded CATERPILLAR®, direct replacement). This seal kit is a high-quality, direct replacement to original parts, at a fraction of the cost.

Description of CATERPILLAR® replacement Seal Kit 1113302

Used in the following applications:

SKIDDERS, 515525, LIFT, CYL #: 1117951,  
SKIDDERS, 515525, LIFT, CYL #: 1397547,  
BACKHOE LOADERS, 416B, BACKHOE SWING, CYL #: 1166861,  
BACKHOE LOADERS, 416B, BACKHOE SWING, CYL #: 6E0288,  
BACKHOE LOADERS, 416C, BACKHOE SWING, CYL #: 1166857,  
BACKHOE LOADERS, 416C, BACKHOE SWING, CYL #: 1699529,  
BACKHOE LOADERS, 420D, BACKHOE SWING, CYL #: 1699529,  
BACKHOE LOADERS, 426B, BACKHOE SWING, CYL #: 1166861,  
BACKHOE LOADERS, 426B, BACKHOE SWING, CYL #: 6E0288,  
BACKHOE LOADERS, 426C, BACKHOE SWING, CYL #: 1166861,  
BACKHOE LOADERS, 428B, BACKHOE SWING, CYL #: 1166861,  
BACKHOE LOADERS, 428B, BACKHOE SWING, CYL #: 6E0288,  
BACKHOE LOADERS, 428B, BACKHOE SWING LH, CYL #: 1166858,  
BACKHOE LOADERS, 428B, BACKHOE SWING LH, CYL #: 6E1864,  
BACKHOE LOADERS, 428B, SIDESHIFT, CYL #: 1166858,  
BACKHOE LOADERS, 428B, SIDESHIFT RH, CYL #: 1166858,  
BACKHOE LOADERS, 428C, BACKHOE SWING, CYL #: 1166861,  
BACKHOE LOADERS, 428C, SIDESHIFT, CYL #: 1166858,  
BACKHOE LOADERS, 428C, SIDESHIFT RH, CYL #: 1166858,  
BACKHOE LOADERS, 436B, BACKHOE SWING, CYL #: 1166861,  
BACKHOE LOADERS, 436B, BACKHOE SWING, CYL #: 6E0288,  
BACKHOE LOADERS, 436C, BACKHOE SWING, CYL #: 1121765,  
BACKHOE LOADERS, 436C, BACKHOE SWING, CYL #: 1166861,  
BACKHOE LOADERS, 436C, BACKHOE SWING, CYL #: 6E5219,  
BACKHOE LOADERS, 438B, BACKHOE SWING, CYL #: 1166861,

---

BACKHOE LOADERS, 438B, BACKHOE SWING, CYL #: 6E0288,  
BACKHOE LOADERS, 438B, BACKHOE SWING LH, CYL #: 6E1864,  
BACKHOE LOADERS, 438B, SIDESHIFT, CYL #: 1166858,  
BACKHOE LOADERS, 438B, SIDESHIFT RH, CYL #: 1166858,  
BACKHOE LOADERS, 438C, BACKHOE SWING, CYL #: 1166861,  
BACKHOE LOADERS, 438C, SIDESHIFT, CYL #: 1166858,  
BACKHOE LOADERS, 438C, SIDESHIFT RH, CYL #: 1166858,  
BACKHOE LOADERS, 446, BACKHOE SWING, CYL #: 1121765,  
BACKHOE LOADERS, 446, BACKHOE SWING, CYL #: 6E5219,  
BACKHOE LOADERS, 446, LOADER TILT, CYL #: 1007844,  
BACKHOE LOADERS, 446, LOADER TILT, CYL #: 9T2995,  
BACKHOE LOADERS, 446B, BACKHOE SWING, CYL #: 1121765,  
BACKHOE LOADERS, 446B, BACKHOE SWING, CYL #: 6E5219,  
BACKHOE LOADERS, 446B, LOADER TILT, CYL #: 1007844,  
BACKHOE LOADERS, 446B, SIDESHIFT, CYL #: 1121765,  
SKIDDERS, 518C, LIFT, CYL #: 1117951,  
SKIDDERS, 518C, LIFT, CYL #: 1397547,  
SKIDDERS, 520D, LIFT, CYL #: 1117951,  
SKIDDERS, 520D, LIFT, CYL #: 1397547,  
SKIDDERS, 522C, LIFT, CYL #: 1117951,  
SKIDDERS, 522C, LIFT, CYL #: 1397547,  
WHEEL DOZERS, 814B, STEERING, CYL #: 6E5024,  
WHEEL DOZERS, 814F, STEERING, CYL #: 6E5024,  
SOIL COMPACTORS, 815B, STEERING, CYL #: 6E5024,  
SOIL COMPACTORS, 815F, STEERING, CYL #: 6E5024,  
LANDFILL COMPACTORS, 816B, STEERING, CYL #: 6E5024,  
LANDFILL COMPACTORS, 816F, STEERING, CYL #: 6E5024,  
LOADERS - WHEEL, 950B, STEERING, CYL #: 6E5024,  
LOADERS - WHEEL, 950E, STEERING, CYL #: 6E5024,  
LOADERS - WHEEL, 950F, STEERING, CYL #: 6E5024,  
LOADERS - WHEEL, 966, STEERING, CYL #: 6E5024,  
LOADERS - WHEEL, 966D, STEERING, CYL #: 6E5024,  
LOADERS - WHEEL, 966E, STEERING, CYL #: 6E5024,  
LOADERS - WHEEL, 966F, STEERING, CYL #: 6E5024,  
LOADERS - WHEEL, 970F, STEERING, CYL #: 6E5024,  
CRAWLER DOZERS, D5H, ANGLING, CYL #: 9T9273,  
CRAWLER DOZERS, D5TSKH, ANGLING, CYL #: 9T9273,  
CRAWLER DOZERS, D6M, ANGLING, CYL #: 1103786,  
CRAWLER DOZERS, D6M, ANGLING, CYL #: 1526485,  
CRAWLER DOZERS, D6M, UNSPECIFIED APPLICATION, CYL #: 1375107,  
INTEGRATED TOOLCARRIERS, IT24F, TILT, CYL #: 1262492,

\*All manufacturer's names, part numbers, and descriptions are used for reference purposes only. We do not imply that any part shown is the product of these manufacturers. We also do not imply that the list price shown is exactly that of the manufacturer.

## Products Show



Hight Quality Seals



Replacement OEM Seals



Factory Direct Sales

Hydraulic Cylinder Seal Kit Components			
Items	Brand	Material	Color
Rod Seals	NOK/SKF/H605	Urethane (TPU)	Ivory/Blue/Gray
Buffer Seals	JSPSEAL	Urethane+PA or PTFE Bronze+NBR	Ivory/Purple
Wipers	JSPSEAL	Urethane+Metal or NBR+Metal	Ivory/Black
Piston Seals	JSPSEAL	PTFE Bronze+NBR+PA OR Nylon+NBR	Brown/Green/Gold
Wear Rings	JSPSEAL	Phenolic Resion Cotton Fabric or PTFE Bronze	Brown/Blue/Yellow
Backup Rings	JSPSEAL	PA or PTFE or PTFE Bronze	Black/White/Brown
O-Rings	JSPSEAL	NBR (Hardness 90 Shore A)	Black

### Why choose JSPSEAL seal kit

- 1.Experience. We have been selling in the aftermarket for nearly 20 years, we know more about what kind of seal kits the machine needs under bad work conditions.
- 2.The accuracy of the dimensions.The same part number as the OEM, easy to query and purchase.
- 3.Price. We can beat all OEM parts in value, while as stated above the qulity of the parts will remain the same.
- 4.Lead Times. JSPSEAL products have been exported for more than 10 years, and our extensive export experience can help you solve various transportation problems. We can ensure fast and

---

efficient lead times across all JSPSEAL Parts.

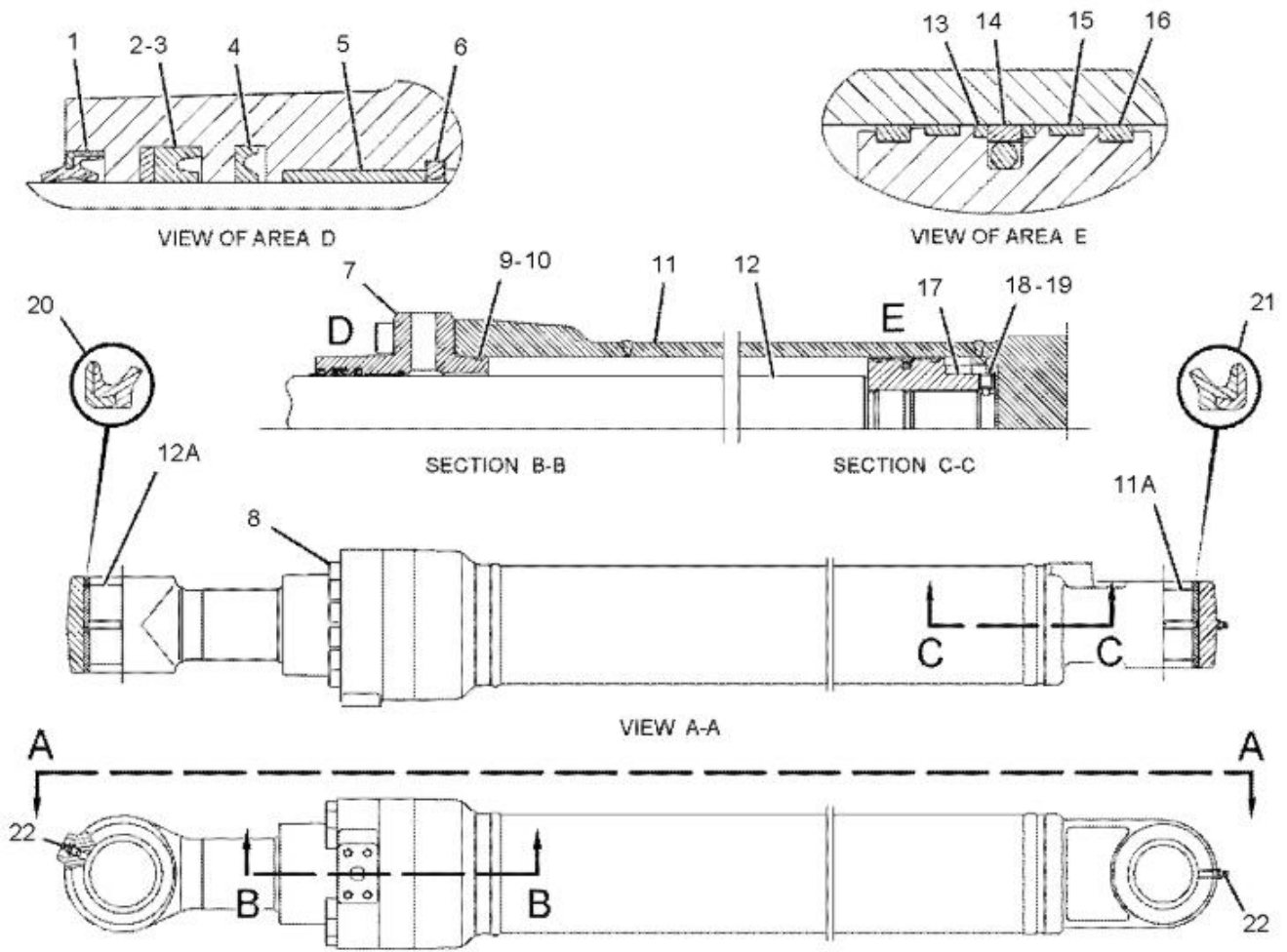
[More Seal Kits](#)



How to find seal kit part number ?

To find the exact part for your machine, the best way to do it is to find out the part number you need, and then search it in our search bar on our homepage, [www.jspseal.com](http://www.jspseal.com). This will show you the right part for what you need, and you can order quickly without fuss.

However, if you can't find the part you need please [contact us](#) and we will source it for you.



## Our Services

Chat on line

Whatsapp/Wechat/Skype

OEM part number

We can help you find OEM part number

Shipment

Express/Air/Sea

[Not quite sure yet?](#)

---

[Why not visit our contact page, we would love to chat with you!](#)

-

Product link : <https://www.jspseal.com/jspcat-1113302-seal-kit-2-x-4-hydraulic-seal-kit.html>