

---

## 707-99-68780 Komastu Hydraulic Cylinder Seal Kits



Seal Kit equivalent to KOMATSU® Part Number 707-99-68780

New OEM Aftermarket Seal Kit (Not branded KOMATSU®, direct replacement). This seal kit is a high-quality, direct replacement of original parts, at a fraction of the cost.

Description of KOMATSU® Replacement Seal 707-99-68780

Used in the following applications:

PC400LC-8 S/N 70001-UP EXCAVATORS

- SERVICE KIT PARTS □ 707-99-68780

PC400-8 S/N 70001-UP EXCAVATORS

- SERVICE KIT PARTS □ 707-99-68780

PC400-8R S/N 75001-UP EXCAVATORS

- SERVICE KIT PARTS □ 707-99-68780

PC400LC-8R S/N 75001-UP EXCAVATORS

- SERVICE KIT PARTS □ 707-99-68780

PC450-8 S/N 70001-UP EXCAVATORS

- SERVICE KIT PARTS □ 707-99-68780

PC450-8R S/N 75001-UP EXCAVATORS

- SERVICE KIT PARTS □ 707-99-68780

---

PC450LC-8 S/N 70001-UP EXCAVATORS

- SERVICE KIT PARTS □ 707-99-68780

PC450LC-8R S/N 75001-UP EXCAVATORS

- SERVICE KIT PARTS □ 707-99-68780

PC550LC-8 S/N 70458-UP EXCAVATORS

- SERVICE KIT PARTS □ 707-99-68780

PC240LC-8K S/N K50001-UP EXCAVATORS

- BOOM ADJUST CYLINDER (INNER PARTS) (FOR 2 PIECE BOOM) □ 707-99-68780

PC240NLC-8K S/N K50001-UP EXCAVATORS

- BOOM ADJUST CYLINDER (INNER PARTS) (FOR 2 PIECE BOOM) □ 707-99-68780

PC400-7-M1 S/N 50001-UP EXCAVATORS

- ARM CYLINDER □ 707-99-68780
- ARM CYLINDER (FOR 2.4M ARM) □ 707-99-68780
- ARM CYLINDER (FOR LOADER) □ 707-99-68780

PC400-7 S/N 50001-UP (Overseas Version) EXCAVATORS

- ARM CYLINDER (FOR 100 HOURS LUBRICATION) □ 707-99-68780
- ARM CYLINDER (FOR 2.4M ARM) □ 707-99-68780
- ARM CYLINDER (FOR 2.4M ARM) (100 HOURS GREASING BOOM TYPE) □ 707-99-68780
- ARM CYLINDER (FOR LOADER) □ 707-99-68780
- ARM CYLINDER(#50001-50146) □ 707-99-68780
- ARM CYLINDER(#50147-) □ 707-99-68780

PC400-7E0 S/N 60001-UP (ecot3) EXCAVATORS

- ARM CYLINDER □ 707-99-68780
- ARM CYLINDER (FOR 100 HOURS LUBRICATING) □ 707-99-68780
- ARM CYLINDER (FOR 2.4M ARM) □ 707-99-68780
- ARM CYLINDER (FOR LOADER) □ 707-99-68780

PC400-8 S/N 70001-70003 EXCAVATORS

- ARM CYLINDER(#70001-) □ 707-99-68780
- ARM CYLINDER(#70001-) □ 707-99-68780

PC400LC-8 S/N A88001-UP EXCAVATORS

- T1120-02A0 ARM CYLINDER □ 707-99-68780

- 
- T1120-04A0 ARM CYLINDER 2.4 M ARM □ 707-99-68780

PC400LC-7L S/N A86001-UP EXCAVATORS

- ARM CYLINDER (STANDARD) □ 707-99-68780

PC400LC-7-M1 S/N 50001-UP EXCAVATORS

- ARM CYLINDER □ 707-99-68780
- ARM CYLINDER (FOR 2.4M ARM) □ 707-99-68780
- ARM CYLINDER (FOR LOADER) □ 707-99-68780

PC400LC-7 S/N 50001-UP (Overseas Version) EXCAVATORS

- ARM CYLINDER (FOR 100 HOURS LUBRICATION) □ 707-99-68780
- ARM CYLINDER (FOR 2.4M ARM) □ 707-99-68780
- ARM CYLINDER (FOR 2.4M ARM) (100 HOURS GREASING BOOM TYPE) □ 707-99-68780
- ARM CYLINDER (FOR LOADER) □ 707-99-68780
- ARM CYLINDER(#50001-50146) □ 707-99-68780
- ARM CYLINDER(#50147-) □ 707-99-68780

PC400LC-7E0 S/N 60001-UP (ecot3, For EU) EXCAVATORS

- ARM CYLINDER □ 707-99-68780
- ARM CYLINDER (FOR 100 HOURS LUBRICATING) □ 707-99-68780
- ARM CYLINDER (FOR 2.4M ARM) □ 707-99-68780

PC400LC-7E0 S/N A87001-UP EXCAVATORS

- ARM CYLINDER (BREAK DOWN) □ 707-99-68780
- ARM CYLINDER (INNER PARTS) □ 707-99-68780

PC400LC-7E0 S/N 60001-UP (ecot3) EXCAVATORS

- ARM CYLINDER □ 707-99-68780
- ARM CYLINDER (FOR 100 HOURS LUBRICATING) □ 707-99-68780
- ARM CYLINDER (FOR 2.4M ARM) □ 707-99-68780
- ARM CYLINDER (FOR LOADER) □ 707-99-68780

PC400LC-8 S/N 70001-70003 EXCAVATORS

- ARM CYLINDER(#70001-) □ 707-99-68780

PC450-7K-E0 S/N K45001-UP EXCAVATORS

- ARM CYLINDER (EXCEPT 2.4M ARM) □ 707-99-68780
- ARM CYLINDER (FOR 2.4M ARM) □ 707-99-68780
- ARM CYLINDER (FOR 2.4M ARM) (FOR BURST VALVE) □ 707-99-68780
- ARM CYLINDER (FOR HEAVY DUTY BOOM) □ 707-99-68780

---

PC450-8 S/N K50001-UP EXCAVATORS

- ARM CYLINDER (EXCEPT 2.4M ARM) □ 707-99-68780
- ARM CYLINDER (FOR 2.4M ARM) □ 707-99-68780
- ARM CYLINDER (FOR BURST VALVE) (EXCEPT 2.4M ARM) □ 707-99-68780
- ARM CYLINDER (FOR BURST VALVE) (FOR 2.4M ARM) □ 707-99-68780

PC450-7 S/N 20001-UP (Overseas Version) EXCAVATORS

- ARM CYLINDER (FOR SOUTH AFRICA) □ 707-99-68780

PC450-7-M1 S/N 20001-UP EXCAVATORS

- ARM CYLINDER □ 707-99-68780

PC450-7K S/N K40001-UP EXCAVATORS

- ARM CYLINDER (EXCEPT 2.4M ARM) □ 707-99-68780
- ARM CYLINDER (FOR 2.4M ARM) □ 707-99-68780
- ARM CYLINDER (FOR BURST VALVE) (EXCEPT 2.4M ARM) □ 707-99-68780
- ARM CYLINDER (FOR BURST VALVE) (FOR 2.4M ARM) □ 707-99-68780

PC450-8 S/N 70001-70003 EXCAVATORS

- ARM CYLINDER(#70001-) □ 707-99-68780

PC450LC-8K HIGH REACH DEMOLITION S/N K50048-UP EXCAVATORS

- DIG ARM CYLINDER (INNER PARTS) □ 707-99-68780

PC450LC-7 S/N 20001-UP (Overseas Version) EXCAVATORS

- ARM CYLINDER (FOR 100 HOURS LUBRICATING) □ 707-99-68780

PC450LC-7-M1 S/N 20001-UP EXCAVATORS

- ARM CYLINDER □ 707-99-68780

PC450LC-7K S/N K40001-UP EXCAVATORS

- ARM CYLINDER (EXCEPT 2.4M ARM) □ 707-99-68780
- ARM CYLINDER (FOR 2.4M ARM) □ 707-99-68780
- ARM CYLINDER (FOR BURST VALVE) (EXCEPT 2.4M ARM) □ 707-99-68780
- ARM CYLINDER (FOR BURST VALVE) (FOR 2.4M ARM) □ 707-99-68780

PC450LC-7K-E0 S/N K45001-UP EXCAVATORS

- ARM CYLINDER (EXCEPT 2.4M ARM) □ 707-99-68780
- ARM CYLINDER (FOR 2.4M ARM) □ 707-99-68780
- ARM CYLINDER (FOR 2.4M ARM) (FOR BURST VALVE) □ 707-99-68780

- 
- ARM CYLINDER (FOR HEAVY DUTY BOOM) □ 707-99-68780

PC450LC-8 S/N 70001-70003 EXCAVATORS

- ARM CYLINDER(#70001-) □ 707-99-68780
- ARM CYLINDER(#70001-) □ 707-99-68780

PC450LC-8 S/N K50001-UP EXCAVATORS

- ARM CYLINDER (EXCEPT 2.4M ARM) □ 707-99-68780
- ARM CYLINDER (FOR 2.4M ARM) □ 707-99-68780
- ARM CYLINDER (FOR BURST VALVE) (EXCEPT 2.4M ARM) □ 707-99-68780
- ARM CYLINDER (FOR BURST VALVE) (FOR 2.4M ARM) □ 707-99-68780

PC450LCHD-8 S/N K50001-UP EXCAVATORS

- ARM CYLINDER (EXCEPT 2.4M ARM) □ 707-99-68780
- ARM CYLINDER (FOR 2.4M ARM) □ 707-99-68780
- ARM CYLINDER (FOR BURST VALVE) (EXCEPT 2.4M ARM) □ 707-99-68780
- ARM CYLINDER (FOR BURST VALVE) (FOR 2.4M ARM) □ 707-99-68780

PC450LC-8 S/N A10001-UP EXCAVATORS

- T1120-02A0 CYLINDER ARM □ 707-99-68780
- T1120-04A0 CYLINDER ARM FOR 2.4 M ARM □ 707-99-68780

PC490LC-10 S/N A40001-UP EXCAVATORS

- T1200-004003 CYLINDER FOR 2.4 M EXTRA SHORT ARM □ 707-99-68780

PC600-7 S/N 20001-UP (Overseas Version) EXCAVATORS

- COUNTER WEIGHT REMOVER CYLINDE (GROUND INSTALLATION TYPE)(#20050-) □ 707-99-68780

PC600LC-7 S/N 20001-UP (Overseas Version) EXCAVATORS

- COUNTER WEIGHT REMOVER CYLINDE (GROUND INSTALLATION TYPE)(#20050-) □ 707-99-68780

\*All manufacturer's names, part numbers, and descriptions are used for reference purposes only. We do not imply that any part shown is the product of these manufacturers. We also do not imply that the list price shown is exactly that of the manufacturer.

## Products Show



Hight Quality Seals



Replacement OEM Seals



Factory Direct Sales

Hydraulic Cylinder Seal Kit Components			
Items	Brand	Material	Color
Rod Seals	NOK/SKF/H605	Urethane (TPU)	Ivory/Blue/Gray
Buffer Seals	JSPSEAL	Urethane+PA or PTFE Bronze+NBR	Ivory/Purple
Wipers	JSPSEAL	Urethane+Metal or NBR+Metal	Ivory/Black
Piston Seals	JSPSEAL	PTFE Bronze+NBR+PA OR Nylon+NBR	Brown/Green/Gold
Wear Rings	JSPSEAL	Phenolic Resion Cotton Fabric or PTFE Bronze	Brown/Blue/Yellow
Backup Rings	JSPSEAL	PA or PTFE or PTFE Bronze	Black/White/Brown
O-Rings	JSPSEAL	NBR (Hardness 90 Shore A)	Black

### Why choose JSPSEAL seal kit

- 1.Experience. We have been selling in the aftermarket for nearly 20 years, we know more about what kind of seal kits the machine needs under bad work conditions.
- 2.The accuracy of the dimensions.The same part number as the OEM, easy to query and purchase.
- 3.Price. We can beat all OEM parts in value, while as stated above the qulity of the parts will remain the same.
- 4.Lead Times. JSPSEAL products have been exported for more than 10 years, and our extensive export experience can help you solve various transportation problems. We can ensure fast and

---

efficient lead times across all JSPSEAL Parts.

[More Seal Kits](#)

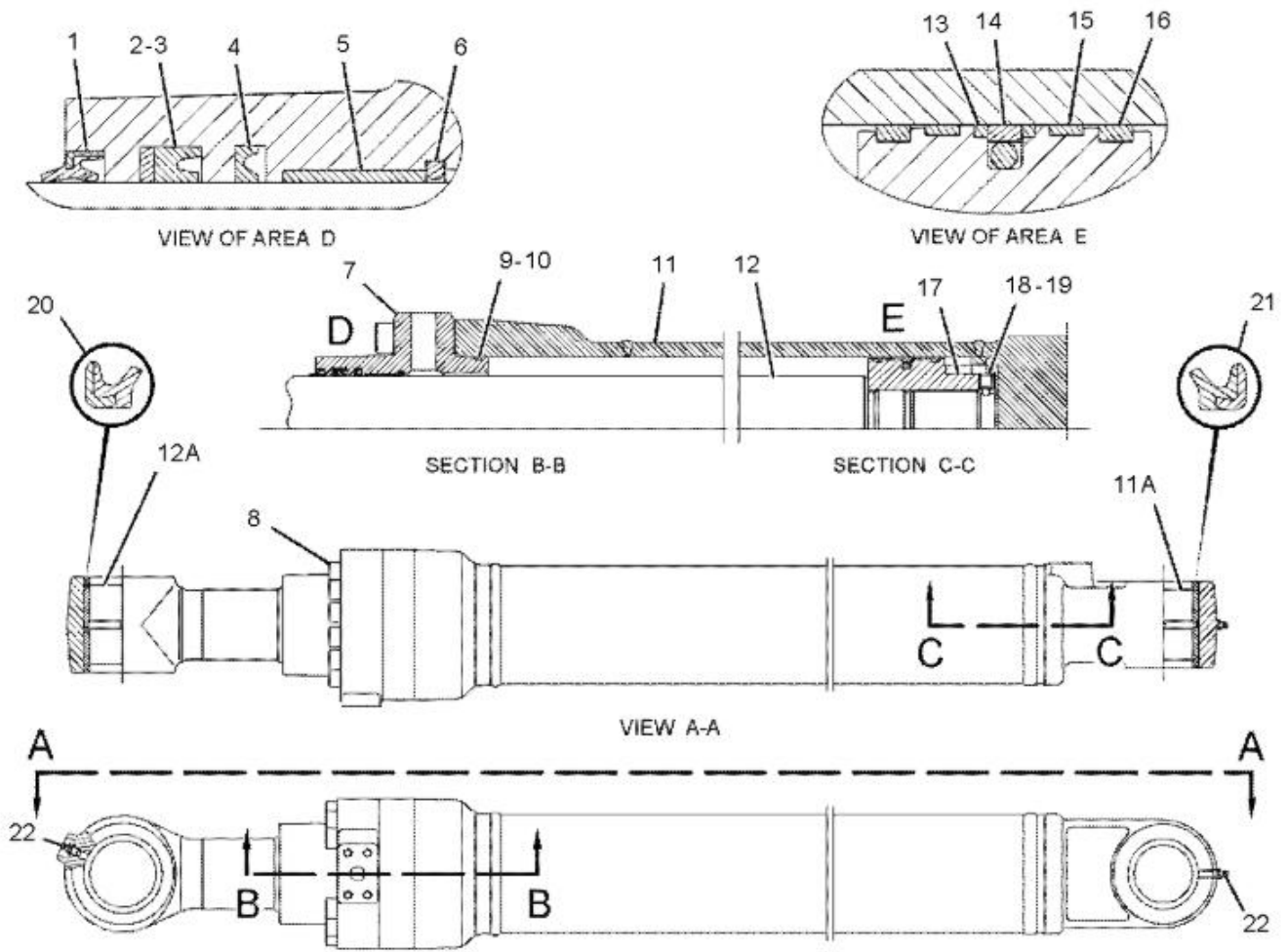


How to find seal kit part number ?

To find the exact part for your machine, the best way to do it is to find out the part number you need, and then search it in our search bar on our homepage, [www.jspseal.com](http://www.jspseal.com). This will show you the right part for what you need, and you can order quickly without fuss.

However, if you can't find the part you need please [contact us](#) and we will source it for you.





## Our Services

Chat on line

Whatsapp/Wechat/Skype

OEM part number

We can help you find OEM part number

Shipment

Express/Air/Sea

[Not quite sure yet?](#)

---

[Why not visit our contact page, we would love to chat with you!](#)

-

Product link : <https://www.jspseal.com/707-99-68780-komastu-hydraulic-cylinder-seal-kits.html>