

---

## AH149815 Replacement Rod Seal Kit 63mm



Seal Kit equivalent to

JOHN DEERE® Part Number AH149815

New OEM Aftermarket Seal Kit (Not branded JOHN DEERE®, direct replacement). This seal kit is a high quality, direct replacement to original parts, at a fraction of the cost.

Description of JOHN DEERE® replacement Seal AH149815

Used in the following applications:

SCRAPERS, 1510C, GATE & WHEEL FRAME, CYL #: AH166738, SERIAL #: -50004  
SCRAPERS, 1510C, GATE & WHEEL FRAME, CYL #: AH216715, SERIAL #: 050005-  
SCRAPERS, 1512C, GATE & WHEEL FRAME, CYL #: AH166738, SERIAL #: -50004  
SCRAPERS, 1512C, GATE & WHEEL FRAME, CYL #: AH216715, SERIAL #: 050005-  
SCRAPERS, 1810C, LIFT GATE, CYL #: AH149815, SERIAL #: 060201-  
SCRAPERS, 1812C, GATE & WHEEL FRAME, CYL #: AH166738, SERIAL #: -50004  
SCRAPERS, 1812C, GATE & WHEEL FRAME, CYL #: AH216715, SERIAL #: 050005-  
SCRAPERS, 1814C, GATE & WHEEL FRAME, CYL #: AH166738, SERIAL #: -50004  
SCRAPERS, 1814C, GATE & WHEEL FRAME, CYL #: AH216715, SERIAL #: 050005-  
SCRAPERS, 2112C, LIFT GATE, CYL #: AH149815, SERIAL #: 060201-  
BACKHOE LOADERS, 310E, BACKHOE CROWD, CYL #: N/A, SERIAL #: 837444-  
BACKHOE LOADERS, 310SE, BACKHOE CROWD, CYL #: AH164137, SERIAL #: 837258-873598  
BACKHOE LOADERS, 310SG, BACKHOE BUCKET, CYL #: AH149791, SERIAL #: -926788  
BACKHOE LOADERS, 310SG, BACKHOE BUCKET, CYL #: AH220526, SERIAL #: 926789-  
BACKHOE LOADERS, 315SE, BACKHOE CROWD, CYL #: AH164137, SERIAL #: 870159-872967  
BACKHOE LOADERS, 410E, BACKHOE CROWD, CYL #: AH164138, SERIAL #: 837229-873597  
BACKHOE LOADERS, 410E, BACKHOE CROWD, CYL #: AH164138, SERIAL #: 873598-  
BACKHOE LOADERS, 410E, BACKHOE CROWD, CYL #: AH164138, SERIAL #: -837228  
BACKHOE LOADERS, 410G, BACKHOE BOOM, CYL #: N/A, SERIAL #: -945072  
BACKHOE LOADERS, 410G, BACKHOE BOOM, CYL #: AH175366, SERIAL #: 945073-  
BACKHOE LOADERS, 410G, BACKHOE BUCKET, CYL #: AH149791, SERIAL #: -926799  
BACKHOE LOADERS, 410G, BACKHOE BUCKET, CYL #: AH220526, SERIAL #: 926800-  
LOADERS - WHEEL, 444H, BUCKET, CYL #: AH174752, SERIAL #: -577511 : 577512-

---

LOADERS - WHEEL, 444H LL, BOOM, CYL #: AH149101, SERIAL #: -570613  
LOADERS - WHEEL, 444H LL, BOOM, CYL #: AT152715, SERIAL #: 570614-  
LOADERS - WHEEL, 444J, BOOM (TOOL CARRIER), CYL #: AH163628, SERIAL #: -611274  
LOADERS - WHEEL, 444J, BUCKET, CYL #: AH174752, SERIAL #: -611274  
LOADERS - WHEEL, 444J, BUCKET, CYL #: AH174752, SERIAL #: 611275-  
LOADERS - WHEEL, 444J, TILT (TOOL CARRIER), CYL #: AH152715, SERIAL #: -611274  
LOADERS - WHEEL, 444K, BUCKET (Z-BAR), CYL #: AH174752, SERIAL #: 642101-  
LOADERS - WHEEL, 444K, BUCKET (Z-BAR), CYL #: AH174752, SERIAL #: -642100  
LOADERS - WHEEL, 524K, BOOM, CYL #: AH227328, SERIAL #: -642245  
LOADERS - WHEEL, 524K, BUCKET, CYL #: AH227329, SERIAL #: -642245  
LOADERS - WHEEL, 544H, BOOM, CYL #: AH147533, SERIAL #: -570068  
LOADERS - WHEEL, 544H, BOOM, CYL #: AH163629, SERIAL #: 570069-  
LOADERS - WHEEL, 544H LL, BOOM, CYL #: AH147533, SERIAL #: -570068  
LOADERS - WHEEL, 544H LL, BOOM, CYL #: AH163629, SERIAL #: 570069-  
LOADERS - WHEEL, 544J, BOOM, CYL #: AH206281, SERIAL #: -611799 ; 611800-  
LOADERS - WHEEL, 544J, BOOM (POWERLLEL™), CYL #: AH208215, SERIAL #: -611799 ; 611800-  
LOADERS - WHEEL, 544J, BOOM (TOOL CARRIER), CYL #: AH163629, SERIAL #: -611799  
CRAWLER DOZERS/LOADERS, 555G, LOADER BOOM, CYL #: AH150111, SERIAL #: ALL  
LOADERS - WHEEL, 624J, BOOM, CYL #: AH163630, SERIAL #: 611797-  
LOADERS - WHEEL, 624J, BOOM, CYL #: AH163630, SERIAL #: -611796  
LOADERS - WHEEL, 624J, BOOM, CYL #: AH163631, SERIAL #: -611796  
LOADERS - WHEEL, 624J, BOOM (POWERLLEL™), CYL #: AH208687, SERIAL #: 611797-  
LOADERS - WHEEL, 624J, BOOM (POWERLLEL™), CYL #: AH208687, SERIAL #: -611796  
LOADERS - WHEEL, 624J, BOOM (TOOL CARRIER), CYL #: AH163631, SERIAL #: -611796  
BACKHOE LOADERS, 710D, BACKHOE STABILIZER, CYL #: AH154791, SERIAL #: 831990-  
BACKHOE LOADERS, 710G, STABILIZER, CYL #: N/A, SERIAL #: 932173-952813  
BACKHOE LOADERS, 710G, STABILIZER, CYL #: N/A, SERIAL #: -932172  
BACKHOE LOADERS, 710G, STABILIZER, CYL #: AH218930, SERIAL #: 952814-  
CRAWLER DOZERS/LOADERS, 750C-II, TILT, CYL #: AH175471, SERIAL #: 904887-  
CRAWLER DOZERS/LOADERS, 750J, DOZER TILT, CYL #: AH208633, SERIAL #: -141343, 141344-  
CRAWLER DOZERS/LOADERS, 750J, DOZER TILT, CYL #: AH208635, SERIAL #: -141343, 141344-  
CRAWLER DOZERS/LOADERS, 850C-II, TILT, CYL #: AH175471, SERIAL #: 904887-  
LOADERS - WHEEL, TC44H, BOOM, CYL #: AH149101, SERIAL #: -570613  
LOADERS - WHEEL, TC44H, BOOM, CYL #: AT152715, SERIAL #: 570614-  
LOADERS - WHEEL, TC54H, BOOM, CYL #: AH147533, SERIAL #: -570068  
LOADERS - WHEEL, TC54H, BOOM, CYL #: AH163629, SERIAL #: 570069-  
LOADERS - WHEEL, 524K, BOOM, CYL #: AH227328, SERIAL #: -642245  
LOADERS - WHEEL, 524K, BUCKET, CYL #: AH227329, SERIAL #: -642245

MISCELLANEOUS INFORMATION – Note: Some of the miscellaneous information is model specific. For this reason, all miscellaneous information is presented by make, model, etc.

SCRAPERS, 1312C, GATE & WHEEL FRAME, CYL #: AH166738, MISC INFO: -2003  
SCRAPERS, 1510C, GATE & WHEEL FRAME, CYL #: AH166738, MISC INFO: 2004-  
SCRAPERS, 1510C, GATE & WHEEL FRAME, CYL #: AH166738, MISC INFO: -2003  
SCRAPERS, 1510C, GATE & WHEEL FRAME, CYL #: AH216715, MISC INFO: 2004-  
SCRAPERS, 1512C, GATE & WHEEL FRAME, CYL #: AH166738, MISC INFO: 2004-  
SCRAPERS, 1512C, GATE & WHEEL FRAME, CYL #: AH216715, MISC INFO: 2004-  
SCRAPERS, 1812C, GATE & WHEEL FRAME, CYL #: AH166738, MISC INFO: -2003  
SCRAPERS, 1812C, GATE & WHEEL FRAME, CYL #: AH166738, MISC INFO: 2004-

---

SCRAPERS, 1812C, GATE & WHEEL FRAME, CYL #: AH216715, MISC INFO: 2004-  
SCRAPERS, 1814C, GATE & WHEEL FRAME, CYL #: AH166738, MISC INFO: 2004-  
SCRAPERS, 1814C, GATE & WHEEL FRAME, CYL #: AH166738, MISC INFO: -2003  
SCRAPERS, 1814C, GATE & WHEEL FRAME, CYL #: AH216715, MISC INFO: 2004-  
CRAWLER DOZERS/LOADERS, 750J, DOZER TILT, CYL #: AH208633, MISC INFO: (IDM)  
CRAWLER DOZERS/LOADERS, 750J, DOZER TILT, CYL #: AH208635, MISC INFO: (ODM)  
CRAWLER DOZERS/LOADERS, 850J, DOZER LIFT, CYL #: AH208630, MISC INFO: (IDM)  
CRAWLER DOZERS/LOADERS, 850J, DOZER TILT, CYL #: AH210140, MISC INFO: (IDM)

\*All manufacturer's names, part numbers, and descriptions are used for reference purposes only. We do not imply that any part shown is the product of these manufacturers. We also do not imply that the list price shown is exactly that of the manufacturer.

## Products Show



## Hight Quality Seals



Replacement OEM Seals



Factory Direct Sales

Hydraulic Cylinder Seal Kit Components			
Items	Brand	Material	Color
Rod Seals	NOK/SKF/H605	Urethane (TPU)	Ivory/Blue/Gray
Buffer Seals	JSPSEAL	Urethane+PA or PTFE Bronze+NBR	Ivory/Purple
Wipers	JSPSEAL	Urethane+Metal or	Ivory/Black

		NBR+Metal	
Piston Seals	JSPSEAL	PTFE Bronze+NBR+PA OR Nylon+NBR	Brown/Green/Gold
Wear Rings	JSPSEAL	Phenolic Resion Cotton Fabric or PTFE Bronze	Brown/Blue/Yellow
Backup Rings	JSPSEAL	PA or PTFE or PTFE Bronze	Black/White/Brown
O-Rings	JSPSEAL	NBR (Hardness 90 Shore A)	Black

## Why choose JSPSEAL seal kit

- 1.Experience. We have been selling in the aftermarket for nearly 20 years, we know more about what kind of seal kits the machine needs under bad work conditions.
- 2.The accuracy of the dimensions.The same part number as the OEM, easy to query and purchase.
- 3.Price. We can beat all OEM parts in value, while as stated above the qulity of the parts will remain the same.
- 4.Lead Times. JSPSEAL products have been exported for more than 10 years, and our extensive export experience can help you solve various transportation problems. We can ensure fast and efficient lead times across all JSPSEAL Parts.

[More Seal Kits](#)



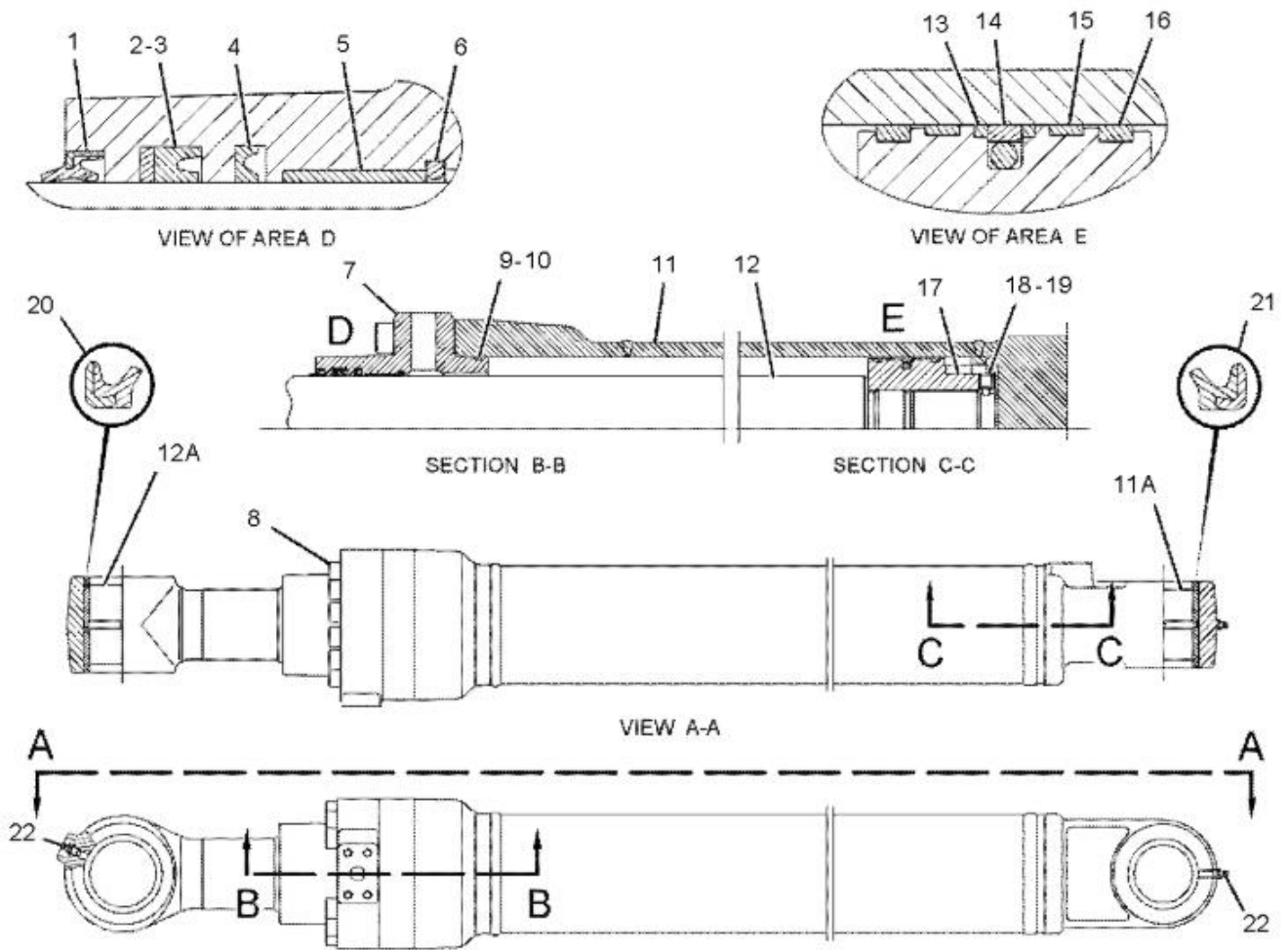


## How to find seal kit part number ?

To find the exact part for your machine, the best way to do it is to find out the part number you need, and then search it in our search bar on our homepage, [www.jspseal.com](http://www.jspseal.com). This will show you the right part for what you need, and you can order quickly without fuss.

However, if you can't find the part you need please [contact us](#) and we will source it for you.

[Seal Kits Catalog](#)



## Our Services

Chat on line

Whatsapp/Wechat/Skype

OEM part number

We can help you find OEM part number

Shipment

Express/Air/Sea

[Not quite sure yet?](#)

[Why not visit our contact page, we would love to chat with you!](#)

---

-

Product link : <https://www.jspseal.com/ah149815-replacement-rod-seal-kit-63mm.html>