
AH149813 SCRAPERS/BACKHOE LOADERS/CRAWLER DOZERS

Replacement Rod seal Kit 45mm



Seal Kit equivalent to

JOHN DEERE® Part Number AH149813

New OEM Aftermarket Seal Kit (Not branded JOHN DEERE®, direct replacement). This seal kit is a high quality, direct replacement to original parts, at a fraction of the cost.

Description of JOHN DEERE® replacement Seal AH149813

Used in the following applications:

SCRAPERS, 1510C, BUCKET, CYL #: AH163552, SERIAL #: -50001
SCRAPERS, 1510C, BUCKET, CYL #: AH216652, SERIAL #: 050002-
SCRAPERS, 1512C, BUCKET, CYL #: AH163552, SERIAL #: -50001
SCRAPERS, 1512C, BUCKET, CYL #: AH216652, SERIAL #: 050002-
SCRAPERS, 1812C, BUCKET, CYL #: AH163552, SERIAL #: -50001
SCRAPERS, 1812C, BUCKET, CYL #: AH216652, SERIAL #: 050002-
SCRAPERS, 1814C, BUCKET, CYL #: AH163552, SERIAL #: -50001
SCRAPERS, 1814C, BUCKET, CYL #: AH216652, SERIAL #: 050002-
LOADERS - SKID STEER, 280, BUCKET, CYL #: AH210329, SERIAL #: 925240-
LOADERS - SKID STEER, 280, BUCKET, CYL #: AH210329, SERIAL #: -925239
LOADERS - SKID STEER, 280, BUCKET, CYL #: AH211461, SERIAL #: 925240-
LOADERS - SKID STEER, 280, BUCKET, CYL #: AH211461, SERIAL #: -925239
BACKHOE LOADERS, 310G, BACKHOE SWING, CYL #: AH220099, SERIAL #: -957128 ; 957129-
BACKHOE LOADERS, 310SG, EXT DIPPERSTICK, CYL #: AH211361, SERIAL #: -910900
BACKHOE LOADERS, 310SG, EXT DIPPERSTICK, CYL #: AH211361, SERIAL #: 910901-926427
LOADERS - SKID STEER, 332, BOOM, CYL #: AH174080, SERIAL #: -103752
LOADERS - SKID STEER, 332, BOOM, CYL #: AH210326, SERIAL #: 103753-
BACKHOE LOADERS, 410G, EXT CROWD, CYL #: N/A, SERIAL #: -911725
BACKHOE LOADERS, 410G, EXT CROWD, CYL #: N/A, SERIAL #: 911726-927725
CRAWLER DOZERS/LOADERS, 450G, DOZER ANGLE (WT), CYL #: AH149950, SERIAL #: -846912
CRAWLER DOZERS/LOADERS, 450G, DOZER ANGLE (WT), CYL #: AH161770, SERIAL #: 846913-

CRAWLER DOZERS/LOADERS, 450G, TILT, CYL #: AH151379, SERIAL #: 822043-846913
CRAWLER DOZERS/LOADERS, 450G, TILT, CYL #: AH161772, SERIAL #: 846914-
CRAWLER DOZERS/LOADERS, 450H, BLADE TILT, CYL #: AH150351, SERIAL #: -925555
CRAWLER DOZERS/LOADERS, 450H, BLADE TILT, CYL #: AH211381, SERIAL #: 925556-
CRAWLER DOZERS/LOADERS, 550G, DOZER ANGLE, CYL #: AH149950, SERIAL #: -846912
CRAWLER DOZERS/LOADERS, 550G, DOZER ANGLE, CYL #: AH161770, SERIAL #: 846913-
CRAWLER DOZERS/LOADERS, 550G, TILT, CYL #: AH151379, SERIAL #: ALL
CRAWLER DOZERS/LOADERS, 550G, TILT, CYL #: AH161772, SERIAL #: 846914-
CRAWLER DOZERS/LOADERS, 550H, BLADE ANGLE, CYL #: AH165689, SERIAL #: -925555
CRAWLER DOZERS/LOADERS, 550H, BLADE ANGLE, CYL #: AH211365, SERIAL #: 925556-
CRAWLER DOZERS/LOADERS, 550H, BLADE TILT, CYL #: AH158633, SERIAL #: -925555
CRAWLER DOZERS/LOADERS, 550H, BLADE TILT, CYL #: AH211381, SERIAL #: 925556-
LOADERS - WHEEL, 644G, STEERING, CYL #: AH150098, SERIAL #: ALL
LOADERS - WHEEL, 644J, STEERING, CYL #: AH211112, SERIAL #: -611231
LOADERS - WHEEL, 644J, STEERING, CYL #: AH211112, SERIAL #: 611232-
LOADERS - WHEEL, 644K, STEERING, CYL #: AH227132, SERIAL #: -632197
CRAWLER DOZERS/LOADERS, 650G, DOZER ANGLE, CYL #: AH149950, SERIAL #: -846912
CRAWLER DOZERS/LOADERS, 650G, DOZER ANGLE, CYL #: AH161770, SERIAL #: 846913-
CRAWLER DOZERS/LOADERS, 650H, BLADE ANGLE, CYL #: AH165689, SERIAL #: -925555
CRAWLER DOZERS/LOADERS, 650H, BLADE ANGLE, CYL #: AH211365, SERIAL #: 925556-
BACKHOE LOADERS, 710G, EXTENSION, CYL #: N/A, SERIAL #: -945479
BACKHOE LOADERS, 710G, EXTENSION, CYL #: AH216318, SERIAL #: 945480-
LOADERS - WHEEL, 724J, STEERING, CYL #: AH227132, SERIAL #: 618146-
LOADERS - WHEEL, 744J, STEERING, CYL #: AH222727, SERIAL #: 612700-
LOADERS - WHEEL, 744J, STEERING, CYL #: AH222727, SERIAL #: -612699
LOADERS - WHEEL, 824J, STEERING, CYL #: N/A, SERIAL #: -612710
LOADERS - WHEEL, 824J, STEERING, CYL #: AH222727, SERIAL #: 612711-

MISCELLANEOUS INFORMATION – Note: Some of the miscellaneous information is model specific. For this reason, all miscellaneous information is presented by make, model, etc.

SCRAPERS, 1312C, BUCKET, CYL #: AH163552, MISC INFO: -2003
SCRAPERS, 1510C, BUCKET, CYL #: AH163552, MISC INFO: -2003
SCRAPERS, 1510C, BUCKET, CYL #: AH163552, MISC INFO: 2004-
SCRAPERS, 1510C, BUCKET, CYL #: AH216652, MISC INFO: 2004-
SCRAPERS, 1512C, BUCKET, CYL #: AH163552, MISC INFO: 2004-
SCRAPERS, 1512C, BUCKET, CYL #: AH216652, MISC INFO: 2004-
SCRAPERS, 1812C, BUCKET, CYL #: AH163552, MISC INFO: -2003
SCRAPERS, 1812C, BUCKET, CYL #: AH163552, MISC INFO: 2004-
SCRAPERS, 1812C, BUCKET, CYL #: AH216652, MISC INFO: 2004-
SCRAPERS, 1814C, BUCKET, CYL #: AH163552, MISC INFO: -2003
SCRAPERS, 1814C, BUCKET, CYL #: AH163552, MISC INFO: 2004-
SCRAPERS, 1814C, BUCKET, CYL #: AH216652, MISC INFO: 2004-
BACKHOE LOADERS, 410E, LOADER BUCKET, CYL #: AH146873, SERIAL #: -88167

*All manufacturer's names, part numbers, and descriptions are used for reference purposes only. We do not imply that any part shown is the product of these manufacturers. We also do not imply that the list price shown is exactly that of the manufacturer.

Products Show



Hight Quality Seals



Replacement OEM Seals



Factory Direct Sales

Hydraulic Cylinder Seal Kit Components			
Items	Brand	Material	Color
Rod Seals	NOK/SKF/H605	Urethane (TPU)	Ivory/Blue/Gray
Buffer Seals	JSPSEAL	Urethane+PA or PTFE Bronze+NBR	Ivory/Purple
Wipers	JSPSEAL	Urethane+Metal or NBR+Metal	Ivory/Black
Piston Seals	JSPSEAL	PTFE Bronze+NBR+PA OR Nylon+NBR	Brown/Green/Gold
Wear Rings	JSPSEAL	Phenolic Resion Cotton Fabric or PTFE Bronze	Brown/Blue/Yellow
Backup Rings	JSPSEAL	PA or PTFE or PTFE Bronze	Black/White/Brown
O-Rings	JSPSEAL	NBR (Hardness 90 Shore A)	Black

Why choose JSPSEAL seal kit

- 1.Experience. We have been selling in the aftermarket for nearly 20 years, we know more about what kind of seal kits the machine needs under bad work conditions.
- 2.The accuracy of the dimensions.The same part number as the OEM, easy to query and purchase.
- 3.Price. We can beat all OEM parts in value, while as stated above the qulity of the parts will remain the same.
- 4.Lead Times. JSPSEAL products have been exported for more than 10 years, and our extensive export experience can help you solve various transportation problems. We can ensure fast and

efficient lead times across all JSPSEAL Parts.

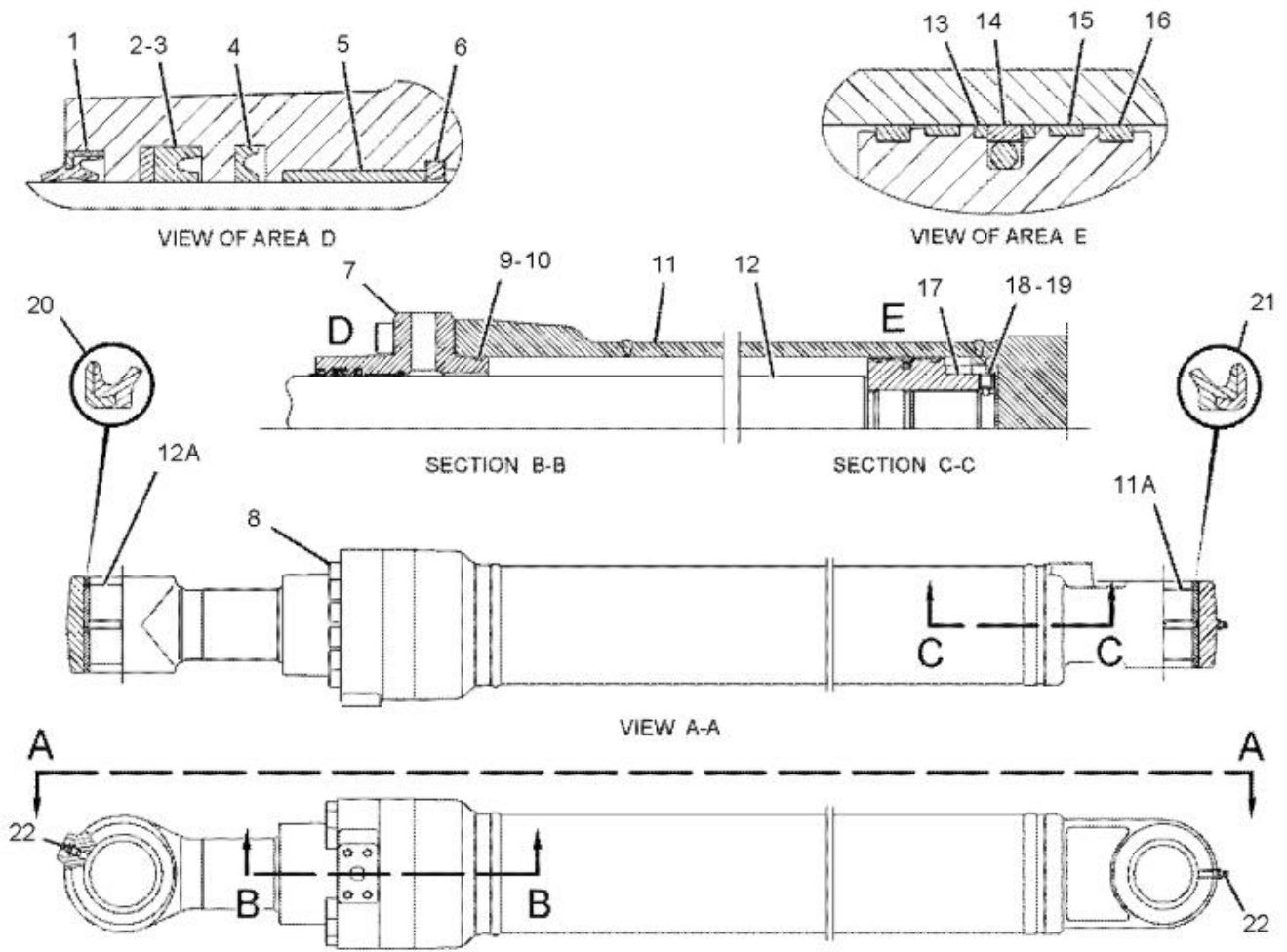
[More Seal Kits](#)



How to find seal kit part number ?

To find the exact part for your machine, the best way to do it is to find out the part number you need, and then search it in our search bar on our homepage, www.jspseal.com. This will show you the right part for what you need, and you can order quickly without fuss.

However, if you can't find the part you need please [contact us](#) and we will source it for you.



Our Services

Chat on line

Whatsapp/Wechat/Skype

OEM part number

We can help you find OEM part number

Shipment

Express/Air/Sea

[Not quite sure yet?](#)

[Why not visit our contact page, we would love to chat with you!](#)

-

Product

link :

<https://www.jspseal.com/ah149813-scrapersbackhoe-loaderscrawler-dozers-replacement-rod-seal-kit-45mm.html>